

## RACING



### TA3008

#### SWIX PHANTOM R EDGE FILE HOLDER

Economy edge sharpener with ball bearings and 80 mm file. Easy adjustment from 85 to 90 degrees. Ergonomic, longer holder for stability and good grip. Protects the hand. Takes files and stones up to 6 mm thickness. Easy tightening of files.



### TA101N

#### SWIX SIDEWALL CUTTER RACING

Sidewall cutter that removes plastic from the sidewalls of skis and snowboards. Ergonomically designed.



### TA100R

Spare blade round for TA103, TA101N and TA104.



### T0165N

Ski brake retainers. 10pcs



#### RACING SIDE EDGE FILE GUIDE IN HARD ALUMINUM

TA586	86°
TA587	87°
TA588	88°
TA589	89°



#### WORLD CUP SIDE EDGE FILE GUIDE WITH STAINLESS STEEL PLATE

TA685N	85°
TA686N	86°
TA687N	87°
TA688N	88°



### TA022

File Clamp with spring. Ea.

**WORLD CUP**

**WORLD CUP BASE EDGE FILE HOLDERS**

Precise and light weight. Aluminum all the way. No plastic. No parts to be replaced. The most precise Base Edge File Holder on the market.

<b>TA05N</b>	0.5°
<b>TA075N</b>	0.75°
<b>TA10N</b>	1°
<b>TA15N</b>	1.5°
<b>TA20N</b>	2°


**TA0520**

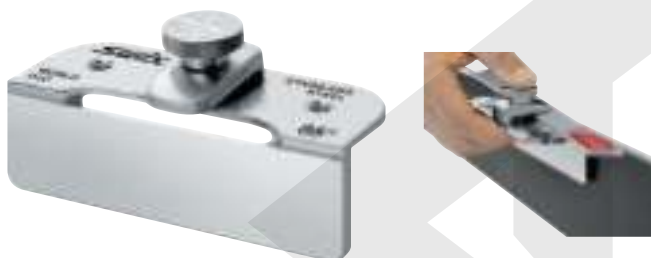
BASE FILE GUIDE, 0.5° TO 2.0°

Adjustable base edge file holder for racing from 0,5° to 2,0°. Easy to adjust the angle. For skiers and servicemen. Quality construction.


**TA104**

WORLD CUP SIDE WALL CUTTER

Tool used by World Cup service men. For cutting side walls of skis and snowboards to expose more of the steel edge for easier filing. Ea.


**WORLD CUP PRO SIDE EDGE FILE GUIDE IN STAINLESS STEEL**

<b>TA785</b>	85°
<b>TA786</b>	86°
<b>TA787</b>	87°
<b>TA788</b>	88°

# Stones

## DIAMOND FILE PROGRAM

Diamond Files offer the special option of having the cutting ability of a file and the deburring and polishing ability of a stone all in one tool. The Diamond Files are perfect to carry in the pocket for quick removal of the fine burrs created on the edge when ski or riding on aggressive man-made snow.

Swix Diamond stones have taken the technology one step further. The diamond fabric has been adhered to the flat, true aluminum piece to assure that there is no pressure rollover when sharpening side and base bevels. This special diamond cluster pattern will last longer than conventional diamond strips. The configuration in conjunction with a polishing agent will help in moving the excess material from the edge to leave a clean, smooth mirror finish.

## RACING

### PRO RACING LINE

Metal Support.



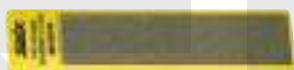
#### TAA100N

X-Coarse 100 grit. Deburring and sharpening diamond stone. Works great for removing case hardening in the tip and tail from grinding stone entry and exit of the ski at the manufacturing facility, and from hitting rocks. 100 mm. Ea.



#### TAA200N

Coarse 200 grit. Deburring and maintenance stone. One of two stones that can do it all in the diamond category. Works great for maintaining sharpness and smoothness. 100 mm. Ea.



#### TAA400N

Medium 400 grit. 2nd in your must have diamonds to maintain a smooth and sharp edge. Starts to bring out that high polish shine. 100 mm. Ea.



#### TAA600N

Fine 600 grit. First diamond stone when you have smooth, clean edge to start honing and polishing the set edge. Great grit for finishing tech skis. 100 mm. Ea.



#### TAA1000N

X-Fine 1000 grit. Final diamond polish when looking for that mirror finish. Extremely exact edge accuracy. Used on alpine skis to achieve that super smooth finish. 100 mm. Ea.



#### T0240

Dual sided stone, fine and coarse in the same tool. Best use for efficiency after a ski comes out of the stone grinding machine, and for removal of rock damages spots on the edge before filing. A back shop work horse, heavy durable and long lasting. Ea.

## BASE

### ECONOMY DIAMOND STONE LINE

Plastic Support. New surface.



#### TA200E

Red Economy Coarse, 100 mm.



#### TA400E

Yellow Economy Medium, 100 mm.



#### TA600E

White Economy Fine, 100 mm.



#### TAA400SU

Universal Performance Diamond Stone. For polishing edges, removing case hardening and deburring tips and tails. 70 mm. Ea.

# Files

## RACING

Swix Racing files are made by the finest file makers in the world. The non-tang file offers a truer and flatter file. This translates to precise edge geometry that is demanded from the World Cup level to the enthusiast level. Best chrome and non-chrome files on the market today.

TPI = Teeth per inch  
TPCm = Teeth per centimeter



### T10103X100B

Fine, 100mm, 17 Tpi, World Cup Racing Pro file. Steel. Extremely sharp fine high quality file for edge geometry set up. New generation of files that reduces the need for second use of files for finish. Last 10 times as long as regular files, Ea.

## RACING FILES - CHROMED

Traditional ski files, chromed and very sharp for your back shop or home ski tuner. These files have been the bench mark for standard ski files for years. These files are a great value for the price.



### T106N

8"/20 cm. 14 tpcm. Swix Viala file Medium 2nd cut. Traditional ski file. Excellent for doing it all. Side and base-edge beveling. 2nd option for price point retail file. One of the most popular files in the program. Much used in World Cup. Ea.



### T104

6"/15 cm. 14 tpcm. Swix Viala file, fine. Traditional chromed tang file for finish work and light touch up. Much used in World Cup. Ea.

## EXTRA COARSE RACING FILES

Working files, these files are to be used by the hands of advanced to professional ski and snowboard tuners.



### T104X

6"/15 cm. 20 tpcm, fine cut. Chromed Finishing File, shorter in length, increased TPCm to smooth out all Striations left by 2nd cut file. Most durable, best cutting 6" file Swix offers. Ea.



### T106X

8"/20 cm. 16 tpcm, 2nd cut. Chromed all purpose file. Best all round shop/consumer file produced by Swix. Side beveling, base beveling set up before diamond work. Durable beyond all other files offered. A retail must for consumers. Ea.



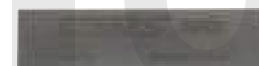
### T107X

8"/20 cm. 13 tpcm. Chromed Bastard removal/setup file. Best file for setting side angle. Non-tang files offer a truer, flatter file for exact degree application. Best file for initial side bevel. Ea.



### T104RSC

4" (100 mm x 25 mm x 3.5 mm) 16 tpcm. Racing Pro file fine Cut 2. Light chrome. Ea.



### T106RSC

4" (100 mm x 25 mm x 3.5 mm) 14 tpcm. Racing Pro file Cut 1. Light chrome. Ea.



### T107RSC

4" (100 mm x 25 mm x 3.5 mm) 10 tpcm. Racing Pro file Bastard Cut 0. Light chrome. Ea.



### T108SB

4" (100 mm x 30 mm x 4.5 mm) non chromed panzer file. Great for use in side-edge beveling guides that have integrated clamp. Min. 12.



### T0108

12"/30 cm non chromed panzer file. All back shops need this. Super durable, can do it all. Top sheet clean up on rental skis to removing heaving burring. Ea.



**BASE****SPORT/RECREATIONAL FILES - NON-CHROMED**

Price point, intro level files. Great for new shops and beginner tuners.

**T0206XS**

1.4" (40 mm x 22 mm x 3.3 mm). Replacement files for file holder TA3001. Fits also most other file holders for beginning tuners. Blister packed. Ea.

**T0177B**

File Brush, Ea.



# EVO Pro Edger

## RACING



**TA3012-110** 110 Volt  
**TA3012-220** 220 Volt



**TA3013XF**  
Spare disc EXTRA FINE for EVO Pro Edger. Super fine polisher and edge hardener, especially great for speed disciplines.



**TA3013F**  
Spare disc FINE for EVO Pro Edger. Super precise World Cup polishing and edge hardener.



**EVO PRO EDGE TUNER**  
Swix Evo Pro Edge tuner is a high precision electrical side edge tuner, developed to restore, maintain and to give the edge a World Cup finish. The EVO is very easy to operate, due to its ergonomically design, quick disc change and easy angle set-up. A key is also that the long lasting diamond disc is independent from the user pressure, as it is attached to a spring, making it impossible to mistakenly change the radius of the ski.  
The EVO is equipped with a high quality diamond disc, and by using a diamond material, the edge becomes harder and more durable. This ensures enhanced performance, especially on ice and artificially snow.  
The EVO comes with a FINE polishing disc included. As spare parts COARSE, MEDIUM, FINE and EXTRA FINE are available.



**TA3013M**  
Spare disc MEDIUM for Evo Pro Edger. General maintenance, and is great when you need to fresh up the edge a bit more than just polishing.



**TA3013G**  
Spare disc COURSE for Evo Pro Edger. Angle set-up on new skis or when changing the angle. Also great for deburring when the edge is damaged.

### GUMMY & CERAMIC STONES

Gummy Stones and Ceramic Stones are often overlooked when starting and finishing side-edge and base-edge work. Gummy Stones are an efficient way to detune (slightly dull) the tip and tail area, and to remove micro-burrs from filing. Ceramic Stones offer that final polish that will help maintain the ski edge geometry.



**TA3014**  
Box for EVO Pro Edger with pre-cut foam insert for great protection. Space for two extra EVO discs.



**T0998**  
Ceramic stone fine. A must-have to use for final passes on side and base edge. Hones and polishes the edge to refine the exact edge geometry from previous tools. Ea.



**T0992**  
Grey Gummy. Every person should own one of these. Great for removing rust and burrs. Also works well for feathering back (detuning) the tips and tails. Ea.



**T0994**  
A hard gummy for polishing and light to medium edge clean up. Can be used after filing to remove micro burrs. Ea.



**T0995**  
Extra hard gummy. Used after filing to remove micro burrs. Makes the steel edges more durable. Ea.

# Waxing Irons

## WORLD CUP



**T70110-2**  
**T70220-2**  
**T70110J-2**

The World Cup T70 Extreme waxing iron lives up to its name. Made for professional use at the highest level in the World Cup. 220 Volt, 1,000 Watt, digital display, and a new movement sensor. The new movement sensor will automatically drop the temperature to 120 degrees after 15 minutes of inactivity to increase the iron's lifespan. When you turn on the iron, the temperature goes up to the last set temperature. A 35 mm thick plate provides a stable temperature and optimal control

when applying glide products. Temperature setting between 80°C and 200°C. A sensor located near the bottom guarantees correct temperature measurement. An angle of 7° on the iron ensures easier melting of the wax. A good view in front of and behind the plate makes it easy to work in both directions. A width of 70 mm provides better control when waxing cross-country skis. Ergonomic handle. It is supplied in a robust plastic case.

## RACING



**T71110A** 110 Volt  
**T71220A** 220 Volt

"T71" ALPINE WORLD CUP WAXING IRON  
For professional racing. 1000 Watt. 50% textured in front. "Floats" better when working with regular waxes on large bases. Angled in front and back. Rounded corners for smooth application. A 25 mm thick plate gives stable temperature and optimal control when applying wax. Temperature adjustment from 80°C to 180°C. Easy to set temperature with LED buttons.



**T72110** 110 Volt  
**T72220** 220 Volt

"T72" RACING DIGITAL IRON 550 Watt.  
A 12 mm plate gives optimal temperature stability. The iron is controlled by a micro processor and has digital temperature regulation. Temperature adjustment from 110°C to 170°C. Angle on heating plate facilitates optimal application. In front the plate is straight to control glide zone waxing and classical skis.

## BASE



**T73D110** 110 Volt  
**T73D220** 220 Volt

"73D" DIGITAL SPORT WAXING IRON  
1000W (220 V version), 850W (110 V version). A economy digital iron with an 18 mm thick plate for a great heat distribution, and with a digital micro-processor that ensures a very precise temperature control. The digital display is controlled by the adjustment wheel. Operating temperatures are 80°C to 170°C.



**T77110** 110 Volt  
**T77220** 220 Volt

WAXING IRON ECONOMY  
Great economy iron which is competitive with far more expensive models. Redesigned from scratch with an ergonomic body and a wide metal plate that suits both alpine, snowboard and nordic. Angled at one side to make it easier to keep a constant speed when melting the wax. The thick metal plate ensures a stable heating. Plate dimension 100x160 mm. Output: 1000W.



**R0384N**

IRON COVER  
Protects iron when traveling.  
Keeps cord and iron together.  
Heat resistant bottom for quick stow away  
Fits all Swix Irons.



# Waxing machine



## Maintenance of Waxing Irons

It is important to take care of the waxing iron. Just a like a car or a bicycle, the iron needs to be maintained. This will secure better performance and longer life. If you do not follow these guidelines, the guarantee is no longer valid:

- Do not leave the iron at high temperatures when not in use. Adjust down to 120°C or turn it off. Particularly important after waxing at high temperatures.
- Always clean the iron with fiberlene paper after use. If not, small wax particles will remain on the iron giving out fumes. Over time the wax particles will fasten to the iron and make it black.
- If the iron becomes black, polish the plate with orange fibertex.
- Try to avoid getting wax between the metal plate and the plastic top.
- When the iron is not in use keep it in upwards position: The upward position is important as it reduces the heating of the inside electronics.
- Place the iron where it is safe for not falling to the ground; The new iron holder for T70-H2 is recommended.
- If you have scratches in the base plate, use a fine sanding paper like grit 500.
- Be careful with use of solvents as this can have impact on the inside components.
- Hold the iron in the handle, never lift it by the cord.
- Avoid unnecessary bending of the cable, as it over time can lead to breakage of the cable.

## Recommended temperature\* on wax machine

TEMPERATURE	KLISTER
110	KX20
100	KX30
90	KN33 KX35N KX40S KX45N
80	K21S KN44 KX55
70	K22
60	KX65 KX75

\* Recommended temperatures are for indoor use. If used outside or if you want a thicker or thinner layer, adjust the temperature approx +/- 10 degrees.

## RACING

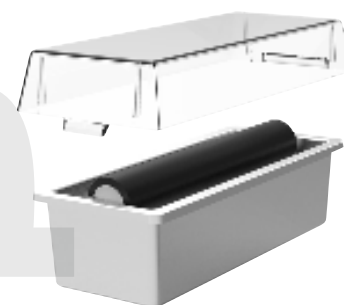
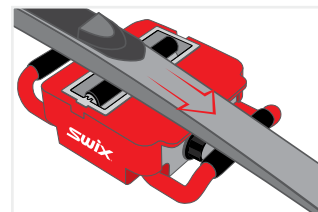
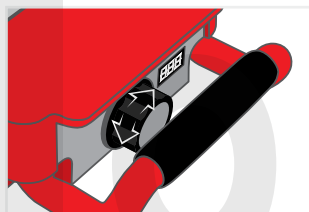


**T60-110-24** 110 Volt  
**T60-220-24** 220 Volt

**NEW**

### SWIX WAXING MACHINE

The latest version boasts enhanced functionality and flexibility, featuring an easily accessible on/off switch, adjustable legs, and an expanded temperature range. These additions will boost the quality of outcomes and expand the range of possibilities. Easily let you apply the wax onto cross-country and alpine skis. Works perfectly for both glide-wax and Klister. The wax tray is exchangeable and comes with a lid, which allows for dedicated trays for specific waxes, and therefore no need for cleaning in between use. Extra trays are sold separately. Temperature range from 50 to 170 degrees Celsius.



**T60-LID**  
Racing T60 Tray Spare Lid  
Spare lid for T60-TRAY.  
**NB: ONLY THE LID.**

**T60-TRAY**  
WAX TRAY FOR T60 WAX MACHINE  
Spare tray with rollers and lid included.



# SWIX Suction System

## RACING



**T15-100** 100 mm 1 pcs.  
**T15-140** 140 mm 1 pcs.

**ROTO COVER W/SUCTION**  
 Ergonomic roto handles with driveshaft and protective cover, that fits SWIX' 100mm and 140 mm roto brushes.



**T15-LN** 1 pcs.

**TWIST LOCK FOR ROTO COVER W/SUCTION**  
 L-bend twist-lock adapter for connecting SWIX' roto covers to vacuum systems.



**T15-SNAP**  
 Snap lock for fast and easy change between Swix Suction cover and Swix Suction frame. You need only one hose and can easily change it from one part to another by pushing the button and pull them apart. Fits perfectly with Swix Flexi hose (T15H)



**T15H**  
 Flexible hose for Swix suction system. Can be stretched from 1m and up to 4 meters. Fix the flexi hose to your vacuum cleaner and to your suction cover or suction frame. We recommend to attach the hose to the roof above your workbench or in the top of your ski storage rack (T0077-FR) for the most efficient way of working.

## WORLD CUP



**T70-FR2**  
 Air suction frame for T70 Extreme Waxing Iron. For a better working environment. Slim version. Connect the suction frame to a vacuum system to reduce the vapour and small wax particles in the waxcabin. Fits perfect to Flexi hose (T15H).

# Waxing Tables

WORLD CUP



## T0077-FR

### SKI STORAGE RACK

The ski storage rack can be mounted on any SWIX waxing table. Practical when there are many skis or boards to prepare. An enhanced version that also can be wall-mountable. When mounted on the wall, you can easily attach the Racing Wax Shelf to the screw clamps to create additional storage space for your wax.

## T0077-3

### WORLD CUP WAXING TABLE.

Solid and stable. Prolongment for long skis. For professional servicemen. New top plate in aluminum for weight reduction and easier carrying. More durable in all weather conditions.



## T0076W-24

NEW

### WALL-MOUNTED WAXING TABLE

Short on space in your waxing room? No worries. This waxing table can be conveniently folded up or down based on your needs.

## RACING



### T0076-3

#### RACING WAXING TABLE

A solid waxing table with improved stability. Upgraded version of one of our most sold waxing table. Highly improved stability by adding two more support bars. All adjustable feet with rubber feet for anti-slip. Solid table top made of pressed wood.

Tabletop: 120 cm x 45 cm. Fits two sets of T0766 Profiles.  
 Net. weight: 13.3 kg/29.7 lbs.



### T0076BN

Bag for easier transport of T0076, T0076-2 and T0076-3 waxing tables.

## BASE

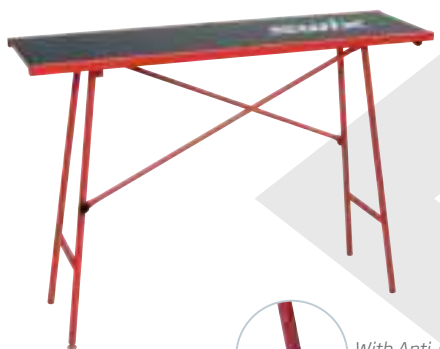


### T00754

#### ECONOMY WAXING TABLE

One leg height adjustment. Great for snowboards.  
 Height: 83 cm.

Tabletop: 96 cm x 45 cm. Fits two sets of T0766 Profiles.  
 Net. weight: 11.5 kg/25.3 lbs.



### T0075W

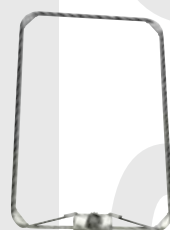
#### WAXING TABLE CONSUMER

Comes with four rubber feet for anti slip.  
 Adjustable height: 87 cm, 85 cm or 75 cm. One leg adjustable.  
 Table top 120 cm x 35 cm.  
 Fits two sets T0766 Profiles.  
 Net. weight: 11 kg/24 lbs.



### T70-H2

Practical Waxing Iron Holder for mounting on to waxing table or workbench.  
 Reduces the risk of dropping a valuable iron on floor. Fits all Swix Irons.



### T0075-WH

Waste bag holder.



### T0152

Waxing carpet in plastic, 1 x 3 m. Ea.



# Vises

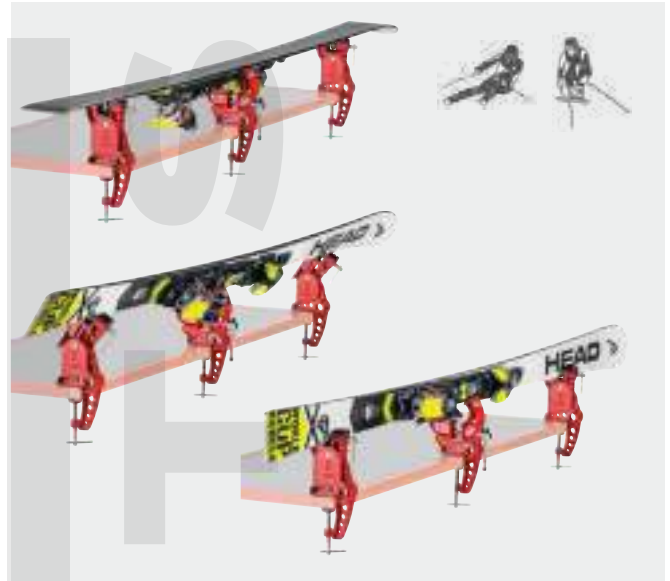
## BASE



### T0149-50

#### WISE 3-PARTS, 50MM JAWS

Swix three piece vise with 50 mm wide jaws. Opens from 40 to 100 mm, for better grip and stability when working on carving skis and radial alpine skis. 60 and 90 degrees side edge working position. Ea.



### T0149-50UA

#### UNIVERSAL ADAPTER

For World Cup Ski Vise T0149-50. Converts your alpine vise into a snowboard or cross country vise. Made of solid plastic and quality rubber.



### T149-70

#### BACKCOUNTRY SKI VISE

The Swix 3 piece Backcountry ski vise offers a easy "click" system to fix back-country skis to the vise. Made of light and durable ballistic plastic. 60 and 90 degrees side edge working position.





## BASE



### T149-75

#### BACKCOUNTRY SKI VISE, CENTER PIECE.

The Center piece of the Swix 3 piece Backcountry vise is the most important product and can be combined with your existing end supports if you already have a Swix standard vise. Made of light and durable ballistic plastic.



### T0149-20

#### JAW ECONOMY VISE

Three pcs. vise with jaw fixation. 20 mm wide jaws. Opens from 35 mm to 90 mm. 60 and 90 degrees side edge working position. Light weight and compact. Ea.

## RACING



### SB031

#### PRO SNOWBOARD VISE

Adjustable width for better stability. Fixed when working on side edges. Keeps the board in horizontal position based upon friction.



### T0149-90N

#### POWER PRO VISE 155MM

For wide skis up to 155 mm. Supports in front and back with screw fixation. Perfect for jumping skis and free ride skis. Ea.

## F4



### T0149-F4

#### F4 TUNING VISE

F4, two-piece vise based on friction. For freeride and alpine skis. Option to work on side edges. Lightweight and compact, made of rock-solid ballistic plastic. Easy to bring while traveling.



# Cross Country Profiles

## WORLD CUP



### T0795

#### WORLD CUP PROFILE

Lightweight aluminum. Front and back part are both adjustable. Can be used both ways without turning the profile. New movable fixing mechanism. Takes skis without bindings. Practical in small waxing rooms. Fits to T0079-1 legs or T0790-K clamps. Takes skis from 150 cm to 210 cm.

Weight: 4.5 kg/10 lbs.

## RACING



### T0793-2

#### CROSS COUNTRY WAXING PROFILE

Same profile in front and back. Lightweight aluminum. Front and back part are both adjustable. Fixation in binding. Takes skis from 140 cm to 210 cm. Fits to T0079-1 legs or T0790-K clamps.

Weight: 3 kg/7 lbs

## BASE



### T0767-3

#### CROSS COUNTRY WAXING PROFILE

Stable economy profile in aluminum and thermo plastic. Light and easy to adjust. Same profile in front and back for use both ways. Two parts that fit into each other. Each part is approx. 110 cm. Takes skis from 150 cm to 210 cm. Fits to T0079-1 legs or T0790-K clamps.

Weight 1,8 kg/ 4 lb.



### T0766

#### THERMO PLASTIC PROFILE FOR CROSS COUNTRY SKIS

Fits into waxing tables T0076, T0076-2, T00754, T0075W. Same profile both in the front and back. Includes holder for fixing the binding. Suitable for both classic and skating skis in lengths from 170-210 cm. Lightweight and very stable to work with.

Weight: 1.4 kg/3.2 lbs.



### T00785N

#### CROSS COUNTRY PROFILE TRAVEL KIT

Three-piece alu profile to put in wax box. Ideal for traveling and to provide secure waxing conditions.

# Accessories for Profiles and Tables

## WORLD CUP



### T007654N

Floor rack for cross country racing skis (44 mm).  
Takes 30 pairs.  
100 cm wide, 28 cm deep.  
Weight: 5 kg

## RACING



### T0076SS

Screw, 6 mm for T0076, T0075  
T00754 waxing tables.



### T07655-24

Racing XC Floor-Rack 14 pairs  
Tailored to hold 14 pairs Perfect for both competitive  
and recreational enthusiasts. Precision meets  
organization.

NEW



### T0077S-24

Racing Wax Shelf for T77-FR  
Maintain a tidy waxing station with this handy shelf.  
It's tailored to fit the T77-FR Ski storage rack.

NEW

## BASE



### T0079NU

Nut, 8 mm for adjusting profile on T0793-2,  
T0079-1. Ea.



### T0790T-75

Holder, 75 mm, for fixing binding in profile T793-2  
and T0766.



### T0769T

Holder for fixing binding in profile T0767-3.



### T0790-K

Clamps for fixing T0793-2, T0795 or  
T0767-3 profiles to table.



### T0793-2RK

Slider for fixing profile in T0793-2.  
Screw height 45 mm.

### T0793RK

Slider for fixing profile in T0795.  
Screw height 30 mm.



### T0079-1

Folding legs for cross country profiles T0793-2,  
T0795 and T0767-3. Now with two stabilizer  
arms and stronger legs.

# SWIX Bulk Wax – Backshop Program

## ALL CONDITION WORK SHOP WAXES



### HS06-1050

#### PS06-1050

Blocks for wax machine.  
Temperature range from -6°C to  
-12°C (21°F to 10°F).  
1100 g/2.42 lbs. (30 x 37 g).



### F4-23-900

F4 Universal All Temperature Solid  
Wax. For skis and snowboards.  
All snow conditions.  
900 g/2 lbs (5 x 180 g).



### U900

Universal wax 900g. (5x180g)

### U900C

Uni Wax 900g.Cold (5x180g)

Universal glide wax for prepping  
workshops. Quality wax that gives  
off minimal emissions and is there-  
fore great for the ski store environ-  
ment.snowboards.



### U5000

#### WORK SHOP WAX

All conditions. Fast melting, uni wax.  
Pellets. Quality, fully refined clean  
wax. Good for the shop environment.  
5 kg /11 lbs.



### U5000C

#### WORK SHOP WAX

Cold conditions. Fast melting, cold  
wax. Pellets. Quality, fully refined  
clean wax. Good for the shop  
environment.  
5 kg /11 lbs.



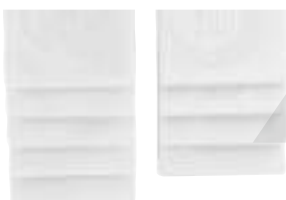
### U60

60 g./2.1 oz. 10 pcs.

### U180

180 g./6.3 oz. 10 pcs.

REGULAR ALL CONDITION UNIVERSAL WAX  
White. Biodegradable. Universal  
hydrocarbon wax for all skis and  
snowboards.



### U2250

Uni Wax 2250g Warm (9x250g)



### U2250C

Universal wax 2250g Cold (9x250g)



### T0150B

Fiberlene cleaning XL 200m  
Large roll of fiberlene paper used for cleaning  
and prepping skis

## RACING



### T0140N

#### WORK SHOP VISE

Adapts to all types of skis and snowboards for side-edge or base-edge tuning,  
waxing, or adjusting bindings. Included:

- Central double vise with 90 mm jaws
- 2 adjustable supports with special rubber for better grip
- 4 additional grey jaws used for skis with plates
- 2 additional white jaws used for snowboard



### I68N

Base Cleaner Liquid 2500ml  
Effective wax remover and cleaner.



# Waxing and Personal Protection

## WORLD CUP



### T41-MASK

#### PRO MASK WITH FAN

CE-Approved mask for professional skiwaxers that provides the best protection. Professional protection system that protects against vapor and dust related to ski waxing. The system comes ready to use with two combination filters for gas and particles. We recommend to replace filters minimum once before, and halfway through the skiing season. Occupational waxers should replace filters every month. The system includes a full face mask, hosing, and a belt with a battery driven ventilation unit.

ALL OF OUR MASK AND FILTERS ARE CE-APPROVED AND PROTECTS YOU AGAINST ALL GAS AND PARTICLES, RELATED TO SKIWAXING WITH SWIX PRODUCTS AFTER OUR RECOMMENDATIONS.

## RACING



### T43-MASK

#### PROFESSIONAL MASK WITH REPLACEABLE FILTER.

Professional mask that gives you the best protection against particle and vapour related to waxing skis. There are two filters included (gas and particle) that should be combined for the best protection. Filters should be replaced at least once a year. For frequent waxers we recommend an additional exchange during the skiing season. The package includes the mask, a storage box and two filters. Protection level: Gas: ABEK1. Particles: P3 R. Safety datasheet can be provided upon request.

ALL OF OUR MASK AND FILTERS ARE CE-APPROVED AND PROTECTS YOU AGAINST ALL GAS AND PARTICLES, RELATED TO SKIWAXING WITH SWIX PRODUCTS AFTER OUR RECOMMENDATIONS.

## BASE



### T42-MASK

#### ECONOMY MASK WITH REPLACEABLE FILTER

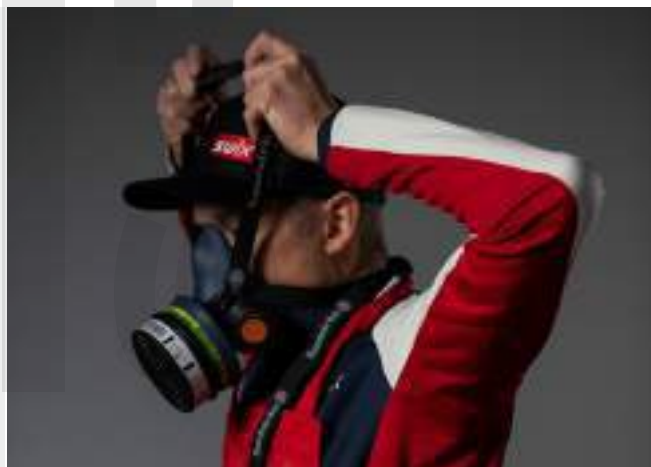
Economy mask that gives great protection against particles and vapor related to ski waxing. There are two filters included (gas and particles) that should be combined for the best protection. Filters should minimum be replaced once a year. For serious waxers we recommend an additional exchange during the skiing season. The package included the mask, a storage box and two filters. They have protection level: Gas: ABEK1. Particles: P3 R.

ALL OF OUR MASK AND FILTERS ARE CE-APPROVED AND PROTECTS YOU AGAINST ALL GAS AND PARTICLES, RELATED TO SKIWAXING WITH SWIX PRODUCTS AFTER OUR RECOMMENDATIONS.

If you use a mask from other vendors, make sure the protection level is minimum A2 (solvent/aerosols) and P3 (particles).

For all masks, note the expiry date and make sure that you follow the cleaning and storage instructions on the packaging/packing insert.

VISIT [SWIXSPORT.COM](https://www.swixsport.com)  
FOR MORE INFORMATION



**WORLD CUP****T41-FGP**

WORLD CUP T41 SPARE FILTER GAS AND PARTICLE

Filter pack for T41-MASK.

The package contains two gas filters and two-particle filters for T41-MASK. We recommend changing the filter before a new season and once during skiing season. Professional waxers should change the filter once a month. Protection level of the filters, Gas: ABE1, Particle: P3 R.

**BASE****T42-2F**

FILTERS FOR ECONOMY MASK T42- AND T43 -MASK

The kit contains both gas and particle filters for T42- AND T43 -MASK, that should be combined for the best protection. Filters should minimum be replaced once a year. For serious waxers we recommend an additional exchange during the skiing season. Filters have protection level: Gas: ABEK1. Particles: P3 R.

ALL OF OUR MASK AND FILTERS ARE CE-APPROVED AND PROTECTS YOU AGAINST ALL GAS AND PARTICLES, RELATED TO SKIWAXING WITH SWIX PRODUCTS AFTER OUR RECCOMENDATIONS.

**GENERAL GUIDE FOR CHANGING FILTERS****AMATEUR WAXERS**

- Can use the same filter all season.  
(wax skis occasionally)

**RECREATIONAL WAXERS**

- Should change the filter once per season. (wax skis regularly)

**PROFESSIONAL WAXERS**

- Should change the filter every 14th day. (wax skis for others (teams or clubs))

# Accessories

## WORLD CUP



### R0386

Base protect tape. 50 mm wide. Adjusted.

## BASE



### R0389

38 mm wide tape to hold skis together. Strong. 66 meters.



### R0391

Long ski strap for freeride, carving and jumping. Takes skis 135 mm wide. Strap width: 50 mm. Tab for easy opening. Min. 25.



### R0400

Simple and easy strap for XC. Takes skis 45 mm wide. No padding and no Velcro. Min. 50.



### R0393 Surmount Ski Touring Strap 50 cm

Super tough and flexible strap for all purposes. Perfect for securing your skis to your backpack as well as holding your skis together. It also works perfectly as a brake retainer while tuning the edges of your skis. The strap stays flexible even in cold temperatures. Great product to always bring in your backpack. Comes in packs of 20



### R0392

Ski straps for Carving skis. With base protector. Strap width: 50 mm. Takes skis 120 mm wide. Min. 25.



### R0402

Racing Pro ski straps for cross country skis. Takes skis that are 45 mm wide. Min. 12.



### R0385

Portable Wall Ski Rack. Takes 4 pairs of alpine skis or 8 pairs of cross country skis.



### R0395

Ski straps for Cross Country skis. With base protector. 35 mm height. Min. 25.



### R0397

Ski straps for both Alpine and Cross Country skis. Pair, 20 mm height. Min. 50.



## Ski and pole bags



### **SW27** DOUBLE SKI BAG

215 cm length. Holds up to 8 pair Nordic and 2 pair Alpine ski's. Heavy duty webbing with grommets for strength at adjustable shoulder straps and handles.



### **SW19** PADDED NORDIC POLE BAG 180 CM LENGTH

Made with 900 denier polyester with PU packing. Holds seven pairs of Nordic poles, PVC inner pipe for protection and durability. ¾ zip lid at top with inside pocket to hold tips. Detachable padded non skid shoulder straps.



### **SW18** PADDED NORDIC POLE BAG 180 CM LENGTH

Made with 900 denier polyester with PU packing. Holds two pairs of Nordic poles, PVC inner pipe for protection and durability. ¾ zip lid at top with inside pocket to hold tips. Detachable padded non skid shoulder straps.



### **R0282** SKI BAG NORDIC 2 PAIR 218CM LENGTH

DOUBLE nordic skibag. 600D Polyester. For two pairs.



### **R280** SKI BAG NORDIC 218CM LENGTH

SINGLE nordic ski bag. 600D Polyester. For one pair.



North mountain wax and tools is a contemporary interpretation of our passion for wax and tool making. The perfect blend of tradition and modernity, North marks a return to the pure essence of what we love; crafting edges and bases for snow so nothing holds you back from the best on mountain experience possible.

Find your North



ski & snowboard wax  
ONLY AVAILABLE IN USA



**NO-18C  
SPEED BRICK COLD**

Biodegradable Cold Wax 180 gms.  
The ultimate in Cold weather  
"Brass Monkey" wax!  
Temperature Range:  
21° F / -4° F (-8° C / -20° C)



**NO-18U  
SPEED BRICK UNIVERSAL**

Biodegradable Universal Wax 180 gms.  
The perfect powder day wax...enough  
said.  
Temperature Range:  
All Temperatures



**NO-18W  
SPEED BRICK WARM**

Biodegradable Warm Wax 180 gms.  
The best anti water repellent wax  
available  
Temperature Range:  
32° F / 50° F (0° C / 11° C)



**NO70C  
PUCK WAX**  
UNIVERSAL PASTE 70ml  
Don't say it 3 x fast.  
Temperature Range:  
All Temperatures



**NO100C  
E - Z FLOW WAX**  
UNIVERSAL LIQUID 100ml  
Easiest wax to apply.  
Temperature Range:  
All Temperatures



**NO150C  
MOUNTAIN FREEDOM WAX**  
UNIVERSAL LIQUID 150ml  
The name says it all!  
Temperature Range:  
All Temperatures

## ski & snowboard tools



### TA3001NO-N NORTH POCKET EDGER

ALL in ONE Tool  
Pocket size file holder with 40 mm file  
Side-Edge 87° – 88° degrees  
Easy to work with  
Min. 12 pcs. Blister packed



### TA3003NO NORTH DIAMOND POCKET EDGER

Pocket size diamond sharpener  
Side-Edge 87° – 88° degrees  
Giving you a razor sharp edge for hard packed conditions.



### SB102NO NORTH SCREW DRIVER TOOL

Compact and comfortable pocket screw driver.



### SB031NO T BAR FREERIDE SNOWBOARD/SKI VISE

Light weight and compact. Works on all Freeride skis and Boards for both waxing and tuning!



### SB034NO PLEXI SCRAPER

We call it our wax remover. This sharp Acrylic scraper removes excess wax from the base to provide optimum gliding. Works great as a windshield scraper on those frosty mornings!



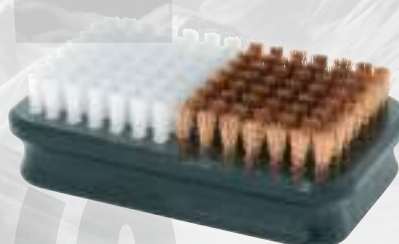
### T0022NO POLISHING CORK

Our "Rub Out" cork provides the friction required to smooth out any liquids, paste and solids waxes. Essential tool!



### T0166NO FELT/NYLON BRUSH

The ideal brush when applying any North liquid or paste wax. Spread the wax evenly on the base using the felt pad then brush clean with the Nylon brush side. Using this brushes increases the durability of the wax.



### T0159NO BRONZE/NYLON BRUSH

This combi-brush is our best all-around brush. It will polish the liquid/pastewaxes and will also work on the harder melt on waxes. The has both bronze and nylon bristles for all waxes. An essential piece of equipment!



## ski &amp; snowboard tools


**T77110-NO-24**  
**WAXING IRON 110V**
**NEW**

The most important function of a waxing iron is temperature control! Variable temperature function for all wax types and an ergonomic shaped handle for easy movement along the base. Don't use Mom's iron on your valuable piece of equipment!

## waxing &amp; tuning kits

ONLY AVAILABLE IN USA


**NOKT1**  
**THE CARRY ON**

NO70C - Puck Wax  
 TA3001NO-N - Pocket Edge Sharpener  
 T0022NO - Polishing Cork  
 Wax / Tune Manual


**NOKT2**  
**THE SHUTTLE**

NO150C - Mountain Freedom Wax  
 TA3001NO-N - Pocket Edge Sharpener  
 TA3003NO - Pocket Diamond Sharpener  
 T0159NO - Bronze/Nylon Brush  
 T0022NO - Polishing Cork


**NOKT3**  
**MASS TRANSIT**

NO-18U - Speed Brick Universal  
 TA3001NO-N - Pocket Edge Sharpener  
 TA3003NO - Pocket Diamond Sharpener  
 T0159NO - Bronze/Nylon Brush  
 SB034NO - Plexi Scraper  
 SB102NO - Screw Driver Tool  
 T75110NO - Waxing Iron 110V





**SWIX TCS - Revolutionary power transmission between hand and shaft**

- 100 % direct response,
- No stretch + no movement = no energy loss
- Hand shaped strap for maximum power transmission. No hard spots
- Index finger control platform
- Easy strap replacements
- 100% natural cork in gripping area.
- 5 different strap options



**SWIX IPM - World leading shaft technology**

- The only Cross Country pole based on molding technology. Swix IPM.
- Aerospace grade materials and 100% traceability for quality insurance.
- HM/UHM Carbon fiber
- Superior stiffness.
- Low weight.
- High balance point for best possible pendulum.



**SWIX TBS - Basket system covering any snow conditions**

- Easy exchange of baskets - no glue required.
- 6 baskets options.
- Super lightweight basket with aluminum spike for soft conditions.

**T.C.S.**



**RCT41-00 / TRIAC 4.0 AERO POLE**

Swix Triac 4.0 Aero is a high performance racing pole with unique technical properties.

The tube is molded with our IPM technology with a patented 4 corners cross section, providing optimum stiffness properties, less vibrations and reduced wind drag.

Stiffness has increased by more than 15% versus its predecessor Triac 3.0. Wind tunnel testing confirms up to 20% reduced drag coefficient in critical areas of the shaft compared to shafts with a cylindrical cross section.

The Swix Triac Aero is compatible with the Swix TBS and TCS systems allowing top performance in all conditions.

Stiffness: 21mm  
Strength: 70 kp  
Shaft weight: 56 gr/m  
Total weight 155 cm pole: 136 grams

**Lengths**

130 cm - 175 cm. 2.5 cm interval.

**Recommended use**

Groomed trails, competition racing, skating and classic skiing



**Official pole for NSF coach and service personnel**

**T.B.S.**



**T.C.S.****RCTC10-00 / TRIAC GIRO POLE**

A high performance racing pole with a traditional circular cross section.

State of the art circular cross sectional pole, comparable with any premium circular poles on the market.

Technical pole with focus on optimization of lightweight, stiffness and pendulum properties.

Ultra High Modulus Carbon composite material with 100% Ultra High Modulus Carbon fiber composition.

The Triac Giro pole is compatible the Swix TBS and TCS systems allowing top performance in all conditions.

The Triac Giro comes without straps so that the entire TCS strap program is available for maximum custom fitting

Stiffness: 22 mm  
Strength: > 70 kp  
Shaft weight: 58 gr/m  
Total weight 155 cm pole: 139 grams

**Diameters & lengths**

Handle 16 mm, basket.  
130 cm - 175 cm. 2.5 cm interval.

**Recommended use**

Groomed trails, competition racing, skating and classic skiing.

**T.B.S.**

# Quantum

## Why choose Quantum?

The Quantum series from SWIX consists of two high-end racing poles for the active and recreational ski racer. The poles offer low weight and high stiffness, only surpassed by the Triac poles.

We work with world leading material suppliers and have refined our processes to create no-compromise products.

Quality is assured through strict quality routines throughout the production, securing top notch products. Compatible with all Triac-system straps (TCS) and baskets (TBS) for exceptional customization.

See page 126 and 128 for more information about the TBS and TCS systems.

T.C.S.

T.B.S.



### RCQ11-00 / QUANTUM Q1 POLE

The Quantum Q1 is a competition pole perfectly balanced with excellent stiffness, pendulum and weight properties.

High Modulus Carbon composite material. The pole is 100% compatible with all Triac components in the SWIX collection such as the TBS and TCS.

The Quantum Q1 comes without straps so that the entire TCS strap program is available for maximum custom fitting.

Stiffness: 26 mm  
Strength: > 70 kp  
Shaft weight: 66 gr/m  
Total weight 155 cm pole: 155 grams

#### Diameters & lengths

Handle 16 mm.  
130 cm - 175 cm. 2.5 cm interval

#### Recommended use

Groomed trails, competition racing, skating and classic skiing.

T.C.S.

T.B.S.



### RCQ21-00 / QUANTUM Q2 POLE

The Quantum Q2 is a competition pole with excellent stiffness, pendulum and weight properties in addition to superior impact properties.

High Modulus Carbon composite material.

The pole is 100% compatible with all Triac components in the SWIX collection such as the TBS and TCS.

The Quantum Q2 comes without straps so that the entire TCS strap program is available for maximum custom fitting.

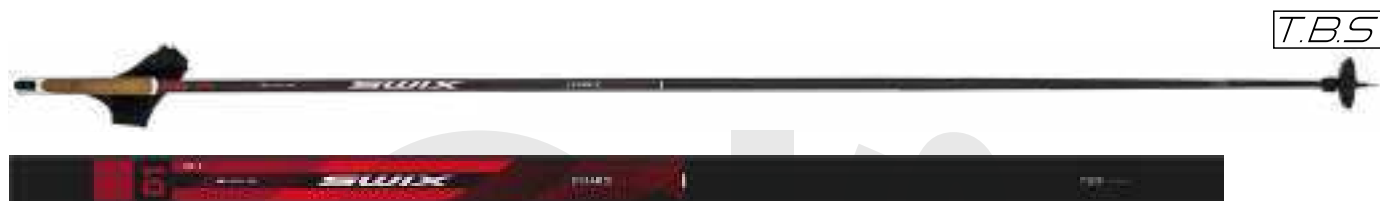
Stiffness: 30 mm  
Strength: > 70 kp  
Shaft weight: 70 gr/m  
Total weight 155 cm pole: 170 grams

#### Diameters & lengths

Handle 16 mm.  
130 cm - 175 cm. 2.5 cm interval

#### Recommended use

Groomed trails, competition racing, skating and classic skiing.

**RCD10-00 / DYNAMIC D1 POLE**

The Dynamic D1 is a carbon composite pole with high stiffness and durability which makes it an excellent choice for a wide variety of skiers from the avid tour skier to the Birkebeiner skier.

Stiffness: 32 mm  
Strength: >75 kp  
Shaft weight: 79 gr/m  
Total weight 155 cm pole: 192 grams

The PCU handle with the new Profit 3D strap assures good power transmission and comfort.

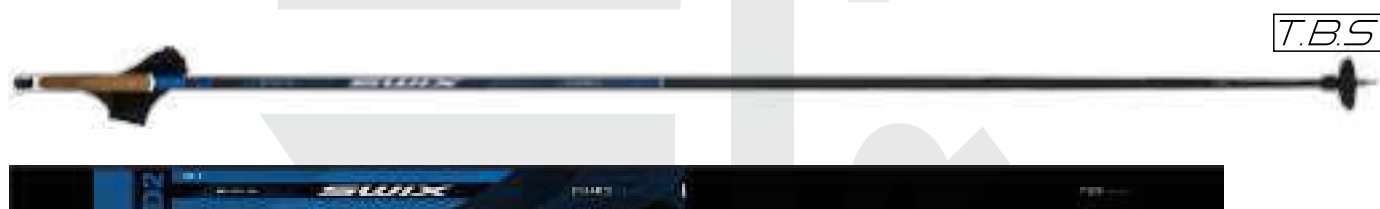
The TBS system allows for easy and fast change of basket. The poles are delivered with the 97 large TBS baskets.

**Diameters & lengths**

Handle 16 mm.  
130 cm - 175 cm. 2.5 cm interval

**Recommended use**

Groomed trails, Nordic competitions, skating and classic skiing.

**RCD20-00 / DYNAMIC D2 POLE**

The Dynamic D2 pole is designed with focus on stiffness, impact strength and durability. This pole is an excellent choice for skiers that are looking for solid performance and that accept a little extra weight for an almost unbreakable pole.

Stiffness: 38 mm  
Strength: >75 kp  
Shaft weight: 84 gr/m  
Total weight 155 cm pole: 199 grams

The PCU handle with the Profit 3D strap assures good power transmission and comfort.

The TBS system allows for easy and fast change of basket. The poles are delivered with the 97 large TBS baskets.

**Lengths**

Handle 16 mm.  
130 cm - 175 cm. 5 cm interval.

**Recommended use**

Groomed trails, skating and classic skiing.

**RCD30-00 / DYNAMIC D3 POLE****RCD30-05 / DYNAMIC D3 POLE PINK**

The Dynamic D3 pole is the core level composite pole with well proven components such as PCU handle, 97 baskets covering all trail conditions. The pole is first and foremost, a touring pole.

Stiffness: 48 mm  
Strength: Unbreakable  
Shaft weight: 99 gr/m  
Total weight 155 cm pole: 212 grams

**Lengths**

Handle 16 mm, basket 10 mm.  
130 cm - 175 cm. 5 cm interval.

**Recommended use**

Groomed trails, skating and classic skiing.

The PCU handle with the new Profit 3D strap assures good power transmission and comfort.

# Infinity



## IT111-00 / INFINITY SONIC ALU POLE

The Infinity Sonic Alu pole is dedicated to skiers who want function combined with easy and intuitive usage. The Sonic strap system allows for easy adjustments for larger or smaller gloves depending on outside temperature.

### Diameters & lengths

Handle 16 mm, basket 10 mm.  
120 cm - 155 cm. 5 cm interval.

### Recommended use

Groomed trails.



## IT111-01 / INFINITY SONIC TOURING ALU POLE

The Infinity Sonic Touring Alu pole is dedicated to skiers that want function combined with easy and intuitive usage. The Sonic strap system allows for easy adjustments for larger or smaller gloves depending on outside temperature. This pole has a larger basket ideal for loose conditions though the asymmetrical shape still works on groomed trails.

### Diameters & lengths

Handle 16 mm, basket 10 mm.  
120 cm - 155 cm. 5 cm interval.

### Recommended use

Loose conditions, off track and groomed trails.



## IT111-10 / INFINITY JUST CLICK ALU POLE

The Infinity Just click Alu pole is equipped with quick and easy strap release handle system. The just click strap is a technical strap with the same features and benefits as the straps used in World Cup allowing easy connection and release from the handle.

### Diameters & lengths

Handle 16 mm, basket 10 mm.  
120 cm - 155 cm. 5 cm interval.

### Recommended use

Groomed trails.



## IT111-21 / INFINITY TOURING ALU POLE

The Infinity Tradition Alu pole has a cork filled urethane handle with shaped loop strap and large basket, ideal for loose conditions though the asymmetrical shape and still works on groomed trails.

### Diameters & lengths

Handle 16 mm, basket 10 mm.  
120 cm - 155 cm. 5 cm interval.

### Recommended use

Loose conditions, off track and groomed trails.



## IT111-30 / INFINITY BASIC ALU POLE

Conical aluminum pole with cork filled urethane handle, shaped loop strap and large 97 basket.

### Diameters & lengths

Handle 16 mm, basket 10 mm.  
120 cm - 155 cm. 5 cm interval.

### Recommended use

Groomed trails.

# Focus

**STF102-00 / FOCUS NORDIC ALU POLE**

Cylindrical aluminum pole in black with Touring handle, straight loop tstrap and fixed basket.

**Diameters & lengths**

Handle 16 mm, basket 16 mm.  
115 cm - 155 cm. 5 cm interval.

**Recommended use**

Groomed trails.





**MT612-00 / BLIZZARD MOUNTAIN EXTREME**

The Mountain Extreme is dedicated to demanding conditions. The pole has a super lightweight tube with excellent strength and durability.

The pole comes with a new extended Ergo/Multigrip handle in EVA and Corkfilled urethane for maximum comfort on long skiing days. The handle is linked to your hand with the Sonic strap system. The strap fixation is bullet proof and strap adjustment is easily done even when wearing thick mittens.

**Weight**

212 grams at 155 cm pole length with leather basket.

**Diameters & lengths**

Handle 16 mm, ferrule 10 mm.  
130 cm - 165 cm. 5 cm interval.

**Recommended use**

Backcountry skiing, expeditions, snowshoeing, powder snow and loose tracks.

**MT312-00 / BLIZZARD MOUNTAIN EXPLORER**

The Mountain Expedition is a 2-piece telescopic back country pole dedicated for demanding use on snow. The pole has super lightweight tubes connected with the Sonic locking system.

The Mountain Expedition comes with a new extended Ergo/Multigrip handle in EVA and Corkfilled urethane for maximum comfort on long skiing days. The handle is linked to your hand with the Sonic strap system. The strap fixation is bullet proof and strap adjustment is easily done even when wearing thick mittens.

**Weight**

230 grams  
Adjustable. Length span 130-165 cm.

**Diameters & lengths**

Handle 18 mm, ferrule 10 mm.  
130 cm - 165 cm.

**Recommended use**

Backcountry skiing, expeditions, snowshoeing, powder snow and loose tracks.

**MT212-00 / BLIZZARD MOUNTAIN TOURER**

The Mountain Touring is a high performance composite pole reinforced to withstand rough usage outside of tracks. At the same time the basket system ensure good performance in groomed trails. The pole comes with the touring handle in corkfilled urethane with the Sonic strap system. The strap fixation is bullet proof and strap adjustment is easily done even when wearing thick mittens. The flexible leather basket gives excellent support against soft/powder snow, but still work well on crust snow and groomed trails.

**Weight**

223 grams at 155 cm pole length.

**Diameters & lengths**

Handle 16 mm, ferrule 10 mm.  
130 cm - 165 cm. 5 cm interval.

**Recommended use**

Backcountry skiing, powder snow and loose tracks.

# Junior



## JCT40-01 / TRIAC JUNIOR POLE, TCS

Composite shaft especially designed for juniors with the Swix Triac Connection system (TCS) and Swix TBS system which enables you to change baskets in the field within seconds! The Triac Jr. comes with a Swix Profit TCS strap.

### Diameters & lengths

Handle 16 mm, basket 10 mm.  
115 cm - 140 cm. 5 cm interval.

### Recommended use

Groomed trails, classic disciplines, skating.



## JCT41-01 / TRIAC JUNIOR POLE, TBS

Composite shaft especially designed for juniors with the Swix TBS system which enables you to change baskets in the field within seconds! The Triac Jr. comes with Swix Profit 3D strap

### Diameters & lengths

Handle 16 mm, basket 10 mm.  
105 cm - 140 cm. 5 cm interval.

### Recommended use

Groomed trails, classic disciplines, skating.



## JCQ10-00 / QUANTUM JUNIOR POLE

Composite shaft especially designed for Juniors. Features PC handle with cork-filled thermoplastic grip zone, Profit 3D strap and large '97 basket.

### Diameters & lengths

Handle 16 mm, basket 10 mm.  
95 cm - 140 cm. 5 cm interval.

### Recommended use

Groomed trails, classic disciplines, skating.

**JLD10-00 / DYNAMIC D1 JUNIOR ALU POLE**

Aluminum pole for Juniors with PC handle and X-fit strap. The X-fit strap is intuitive and easy to use. Just as easy to enter as a traditional loop strap, but the performance of the strap helps developing good skiing technique. Features a large '97 racing basket.

**Diameters & lengths**

Handle 16 mm, basket 10 mm.  
95 cm - 130 cm. 5 cm interval.

**Recommended use**

Groomed trails, classic, skating.

**JLD20-00 / DYNAMIC D2 JUNIOR ALU POLE**

Cylindrical 5086 aluminum shaft with PC handle, shaped loop strap and racing basket fitted to develop good skiing technique.

**Diameters & lengths**

Handle 13 mm, basket 13 mm.  
80 cm - 115 cm. 5 cm interval.

**Recommended use**

Groomed trails, classic, skating.

**JLF204-00 / FOCUS CROSS JUNIOR POLE**

Children's pole with components such as PC handle and a basket suitable for groomed trails

**Diameters & lengths**

Handle 13 mm, basket 13 mm.  
80 cm - 115 cm. 5 cm interval.

**Recommended use**

Groomed trails, classic, skating.

**JLF304-00 / FOCUS SNOWPATH JUNIOR POLE**

Aluminum pole for the youngest ones. The pole comes with the ergonomic children's handle and easy adjustable straps. For safety the ferrule is made of thermoplastics and has a tip with rounded shape. Large basket prevents the pole from sinking deep into soft snow.

**Diameters & lengths**

Handle 13 mm, basket 13 mm.  
70 cm - 105 cm. 5 cm interval.

**Recommended use**

Wherever there is snow.

T.B.S. Spare parts

All baskets, straps and handles are sold in pairs



**RDTRTXS2**  
Basket Triac claw, XSmall



**RDTRTS2**  
Basket Triac, leaf, Small



**RDRTL2**  
Basket Triac, paw, Large



**RDTRTS4**  
Lightweight Leaf pendulum  
Basket with spike for soft  
conditions only.



**RDRTL4**  
lightweight paw pendulum.  
Larger basket with spike for  
soft conditions only.



**RDTRT97L**  
Large 97 basket for SWIX Triac.  
Basket system



**RDHH925**  
Ferrule roller TBS, roller.



**25033-23**  
Roadline Rollerski Ferrule  
Approved for FIS competitions



**RDTBSSTD**  
TBS pack std. Leaf and roller



**RDTBSPRO2**  
TBS PENDULUM BASKET KIT  
Lightweight basket kit for SWIX TBS  
system, including all SWIX lightweight  
baskets such as Leaf pendulum, paw  
pendulum and carbon claw.

TBS GUIDE	loose snow	medium hard snow	very hard snow
Carbon Claw		☆☆	☆☆☆
Carbon Leaf Carbon Leaf Pendulum	☆☆	☆☆☆	☆☆
Carbon Paw / 97T Carbon Paw Pendulum	☆☆☆	☆☆	

Loose snow: You easily sink down while walking on the snow surface.  
Medium hard snow: Your shoe makes a clear imprint in the snow, not sink in more than approx. 10 mm.  
Very hard snow: Adult's foot leaves slight or no impression on snow.



Spare parts

All baskets, straps and handles are sold in pairs



**RDPCCA.0WC**  
Handle for Swix Triac Aero Cross section.  
White with natural cork grip.



**RDPCC3.0WC**  
TCS handle for Triac 3.0.  
White with natural cork grip.



**RDTCSWC**  
TCS handle for circular poles 16mm cross section.  
White with natural cork grip.



**TRIAC 3.0 ORIGINAL STRAP**  
**RDTM3** Strap Triac 3.0, medium  
**RDTL3** Strap Triac 3.0, Large  
**RDTXL3** Strap Triac 3.0, X-large



**TRIAC X-FIT**  
**RDBC3S** Strap Triac 3.0 X-fit Small  
**RDBC3M** Strap Triac 3.0 X-fit Medium  
**RDBC3L** Strap Triac 3.0 X-fit Large  
**RDBC3XL** Strap Triac 3.0 X-fit X-large



**TRIAC 3.0 ADJUSTABLE STRAP**  
**RDTM3AD** Strap Triac 3.0 flex, small  
**RDTL3AD** Strap Triac 3.0 flex, medium  
**RDTXL3AD** Strap Triac 3.0 flex, Large



**SWIX PROFIT STRAP**  
Swix TCS Profit has a construction that offers a perfect fit while keeping excellent flexibility within each size. The section between the index finger and thumb is an integrated part of the strap body.



**SWIX TCS PROFIT QUICK RELEASE STRAPS**  
The Swix TCS Profit Quick Release strap features the new Quick Release TCS retainer that allows detaching the strap without a separate release tool. Changing straps has never been easier.



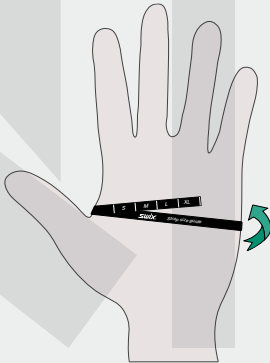
**RDTST**  
Release tool for TCS straps

**RDPFTCSS** Profit, small  
**RDPFTCSM** Profit, medium  
**RDPFTCSL** Profit, Large  
**RDPFTCSXL** Profit, X-large  
**RDPFTCSXXL** Profit, XX-large

**RDPFTCSQR STRAP PROFIT TCS QUICK RELEASE**  
Sizes: Small, Medium, Large, Xlarge XXlarge

Strap size guide

Cut off the ribbon to the right on this page. Place the ribbon around the hand as close to the thumb as possible. You find the recommended strap size where the white half-arrow meets the ribbon. Measure without wearing gloves. This strap size recommendation is correct when wearing race style gloves. If you will be wearing thicker gloves we suggest going up one strap size.



XS	140-165
S	165-190
M	190-215
L	215-240
XL	240-265
XXL	265-290

14 CM



## Cross Country Spare Parts

All baskets, straps and handles are sold in pairs



### RDPCC100WC

White wedge handle with natural cork grip. Fits poles with 16mm circular cross section.



### RDPUC100WC

White wedge handle with cork-filled urethane grip. Fits poles with 16mm circular cross section.



### RDPCN100NW

Handle PC, black/white, 16 mm



### RDPCC110WC

White wedge handle with natural cork grip. Fits Triac poles with triangular cross section.



### PRO FIT 3D STRAP

The strap consists of 3D mesh lining with a solid layer of nylon on the outside. The combination allows efficient power transfer during skiing, while ensuring optimal comfort.



### STRAP SWIX X-FIT

The strap consists of neoprene pads with a solid layer of nylon on the outside. The combination allows for efficient power transfer.

- |                  |                            |
|------------------|----------------------------|
| <b>RDPF3DS</b>   | Strap Pro Fit 3D, Small    |
| <b>RDPF3DM</b>   | Strap Pro Fit 3D, Medium   |
| <b>RDPF3DL</b>   | Strap Pro Fit 3D, Large    |
| <b>RDPF3DXL</b>  | Strap Pro Fit 3D, X-large  |
| <b>RDPF3DXXL</b> | Strap Pro Fit 3D, XX-large |

- |                |                           |
|----------------|---------------------------|
| <b>RDBCPS</b>  | Strap SWIX X-Fit, Small   |
| <b>RDBCPM</b>  | Strap SWIX X-Fit, Medium  |
| <b>RDBCPL</b>  | Strap SWIX X-Fit, Large   |
| <b>RDBCPLX</b> | Strap SWIX X-Fit, X-large |



### RDBC

Strap Biathlon, competition



### RDSRBIA

Strap Biathlon



### RDSR2412

Strap shaped touring 24/12

## JUST CLICK



### RDCGWUC

White Just Click handle with natural cork grip. Fits poles with 16mm circular cross section.



### RDCGWUC

White Just Click handle with cork-filled urethane grip. Fits poles with 16mm circular cross section.



- |                 |                          |
|-----------------|--------------------------|
| <b>RDCG5S</b>   | Strap Just click, small  |
| <b>RDCG5M</b>   | Strap Just click, medium |
| <b>RDCG5L</b>   | Strap Just click, large  |
| <b>RDCG5XL</b>  | Strap Just click, XL     |
| <b>RDCG5XXL</b> | Strap Just click, XXL    |

*All baskets, straps and handles are sold in pairs*

## OTHER SPARE PARTS



### RDTR94S

Basket 97 Large, black, HM tip, 10 mm



### RDTR398N

Basket touring, 16mm



### RDHH915C

Touring ferrule for poles with 10mm circular shaft tips. To be used with the RDTR400N Touring 99 basket (bought separately).



### RDTR400N

Basket touring 99 - black  
Fits ferrule RDHH915C



### RDTR303

Basket 98 mm round children, white



### RDPCLTW

Locking cap Triac handle-white



### RDPCLCW

Locking cap for PC-handle, white



### RDHH922

Roller ski ferrule with a lightweight and durable spike in hard metal.



### T0176

Glue stick (4 pcs. of 10.5 g)



### PRP2018

Poleholder

# Spare Parts for Mountain Poles

All baskets, straps and handles are sold in pairs



## RDHSXC

SWIX Sonic XC handle with urethane cork grip (not including retainer).

### TOURING HANDLE

#### WITH SWIX SONIC STRAP SYSTEM

- Cork-filled urethane for warmth and comfort.
- Sonic strap system for easy adjustments with thick gloves on your hands.

Compatible components for this handle is the RDTPSTM "Sonic strap MT" and RDSRMT "Retainer Sonic XC handle".



## RDSRMT

Retainer Sonic XC handle, Orange  
Fits only RDHSXC Sonic Handle



## RDTPSTM

Sonic strap MT poles. (Not including retainer).



## RDBNSB

Basket Nut SWIX Sonic Ferrules  
To be used with the RDHHSB ferrule.



## RDTRPIB



## RDTR442

Basket leather brown  
Baskets for RDHH933 only



## RDTRTPNL



## RDTRTPNM



## RDHH933

Ferrule Mountain black, 10 mm  
To be used with the RDTR442 Leather basket.



## RDHHSB

Ferrule Sonic hard metal tip. Fits poles with 10mm circular shaft tip. Fits all sonic baskets:

- RDTRTPNM
- RDTRTPNL
- RDTRPIB

OBS: To be used with basket nut RDBNSB (sold separately).



## RDXMT3U

Upper tube MT300 complete, piece



## RDXMT3L

Lower tube MT300 ferrule, piece

## Swix Blizzard

The Blizzard Concept contains a range of poles dedicated for backcountry skiing, snowshoeing and expeditions on all kinds of snow conditions.

ocus has been functionality, durability and use of proven components by experts.

All tubes are made from composites for high strength and durability combined with low weight.

The three models have the Sonic interchangeable basket system offering four different baskets with different sizes and material.

- Large Leather basket. 26 grams is by far the most durable basket with best support against powder snow. Ø 120 mm.
- Large Coated Nylon basket. 16 grams has same size as the leather basket, lower weight, but not as durable as the leather basket. Ø 120 mm.
- Small Coated Nylon basket. 11 grams has a smaller disc so not as much support on deep powder snow. Ø 80 mm.
- Sonic piste basket dedicated for skiing in slopes. Ø 65 mm.


**AR112-E0 / SWIX SONIC R1 EXTENDED**

FULL CARBON 2-PIECE  
WITH SWIX SONIC LOCKING SYSTEM

The SWIX Sonic R1 with extended alpine handle in EVA foam.

The strap has unique self locking system ensuring easy and fast adjustments. The strap attachment secures easy adjustment/replacement of straps (Patent pending).

**Highlights**

- 100% high strength carbon fiber.
- SWIX Sonic locking system.
- Extended Multipurpose handle – ski scraper, tech-binding hook.
- Multifunction strap – fast fixation and adjustments, continues loop adjustment.
- Flexi basket – lightweight, easy to change.

**Working lengths and weight**

- |                   |                |
|-------------------|----------------|
| • 105 cm - 130 cm | 382 grams/pair |
| • 115 cm - 140 cm | 398 grams/pair |
| • 125 cm - 150 cm | 414 grams/pair |


**AR112-T0**

/ SWIX SONIC R1 TREKKING

FULL CARBON 2-PIECE WITH SWIX SONIC  
LOCKING SYSTEM

The SWIX Sonic R1 with extended Ergo/Multigrip handle in EVA and Cork-filled urethane for more focus on comfort while walking uphill.

The strap has unique self locking system ensuring easy and fast adjustments. The strap attachment secures easy adjustment/replacement of straps (Patent pending).

**Highlights**

- 100% high strength carbon fiber.
- SWIX Sonic locking system.
- Ergo/Multigrip handle in EVA and Corkfilled urethane for longer hikes before skiing down
- Multifunction strap – fast fixation and adjustments, continues loop adjustment.
- Flexi basket – lightweight, easy to change.

**Working lengths and weight**

- |                   |                |
|-------------------|----------------|
| • 105 cm - 130 cm | 386 grams/pair |
| • 115 cm - 140 cm | 402 grams/pair |
| • 125 cm - 150 cm | 418 grams/pair |

**AR212-00 / SWIX SONIC R2****2-PIECE CARBON/COMPOSITE**

The combination of 100% high strength carbon fiber upper section and composite in lower section offers the perfect combination of lightweight and durability.

Breathable, lightweight "non slip" EVA foam handle with hard details designed to allow easy removal of excessive snow build up on the top of the skis.

The handle "Hook" allows for easy unlock-lock several "rando" bindings.

The strap has a unique self-locking system that ensures easy and fast adjustments. The strap attachment secures easy adjustment/replacement of straps (Patent pending).

The basket is engineered in a coated nylon fabric for super lightweight and optimum support against soft snow.

**Highlights**

- 100% high strength carbon/composite.
- Swix Sonic locking system.
- Multipurpose handle - ski scraper, tech-binding hook.
- Multifunction strap - fast fixation and adjustments, continues loop adjustment.
- Flexi basket - lightweight, easy to change.

**Working lengths and weight**

- |                   |                |
|-------------------|----------------|
| • 105 cm - 130 cm | 411 grams/pair |
| • 115 cm - 140 cm | 430 grams/pair |
| • 125 cm - 150 cm | 449 grams/pair |

**AR312-00 / SWIX SONIC R3****2-PIECE CARBON/COMPOSITE POLE**

The combination of 100% high strength carbon fiber upper section and composite in lower section offers the perfect combination of lightweight and durability.

The upper tube has a non slip surface combined with grippy "non slip" TPR coated Sonic handle with hard details designed to allow easy removal of excessive snow build up on the top of the skis

The handle "Hook" allows for easy unlock-lock several "rando" bindings.

The strap has unique self locking system ensuring easy and fast adjustments. The strap attachment secures easy adjustment/replacement of straps (Patent pending).

The pole is supplied with a powder basket for deep snow conditions.

**Highlights**

- 100% Carbon/Composite tubes.
- Swix Sonic locking system.
- Multipurpose handle - ski scraper, tech-binding hook.
- Multifunction strap - fast fixation and adjustments, continues loop adjustment.
- Flexi basket - lightweight, easy to change.

**Working lengths and weight**

- |                   |                |
|-------------------|----------------|
| • 105 cm - 130 cm | 479 grams/pair |
| • 115 cm - 140 cm | 498 grams/pair |
| • 125 cm - 150 cm | 517 grams/pair |



# Sonic Alpine Ski touring spare parts

## LOWER TUBES FOR SWIX SONIC POLES

[Sold in pieces, not pairs](#)



**RDTPLR12-100** / Sonic R1 Lower tube, ferulle-100cm (105-130 cm)

**RDTPLR12-110** / Sonic R1 Lower tube, ferulle-110cm (115-140 cm)

**RDTPLR12-120** / Sonic R1 Lower tube, ferulle-120cm (125-150 cm)



**RDTPLR22-100** / Sonic R2 Lower tube, ferulle-100cm (105-130 cm)

**RDTPLR22-110** / Sonic R2 Lower tube, ferulle-110cm (115-140 cm)

**RDTPLR22-120** / Sonic R2 Lower tube, ferulle-120cm (125-150 cm)



**RDTPLR32-100** / Sonic R3 Lower tube, ferulle-100cm (105-130 cm)

**RDTPLR32-110** / Sonic R3 Lower tube, ferulle-110cm (115-140 cm)

**RDTPLR32-120** / Sonic R3 Lower tube, ferulle-120cm (125-150 cm)

## UPPER TUBES FOR SWIX SONIC POLES



**RDTPUTR11-T0**

Sonic R1 top tube, trekking handle w/locking



**RDTPUTR11-E0**

Sonic R1 and R2 top tube, extended handle with locking



**RDTPUTR32**

Sonic R3 Upper tube, w/locking



**RDTEVA**

SWIX Sonic Handle EVA, Including Strap Retainer



**RDTPTPR**

SWIX Sonic Handle TPR, Including Strap Retainer



**RDTPSTX2**

SWIX Sonic Strap, Including Strap Retainer



**RDHHSB**

Ferrule Sonic, HM tip, 10mm



**RDBNSB**

Basket Nut SWIX Sonic Ferrules



**RDHH039NE**

Ferrule Alp, long, HM tip, 10 mm



**RDTRTPNL**

Basket SWIX Sonic, Black, Large  
Ø120 mm.



**RDTRTPNM**

Basket SWIX Sonic, Black, Medium  
Ø80 mm



**RDTRTPRM**

Basket SWIX Sonic, Red, Medium  
Ø80 mm



**RDTRPIB**

Basket SWIX Sonic Piste Black  
Ø65 mm



**RDTR30NE**

Basket alpine for deep snow  
Ø80 mm black  
Fits RDHH039NE/RDHH039RE

[All baskets are sold in pairs](#)